

# We harvest the sun!

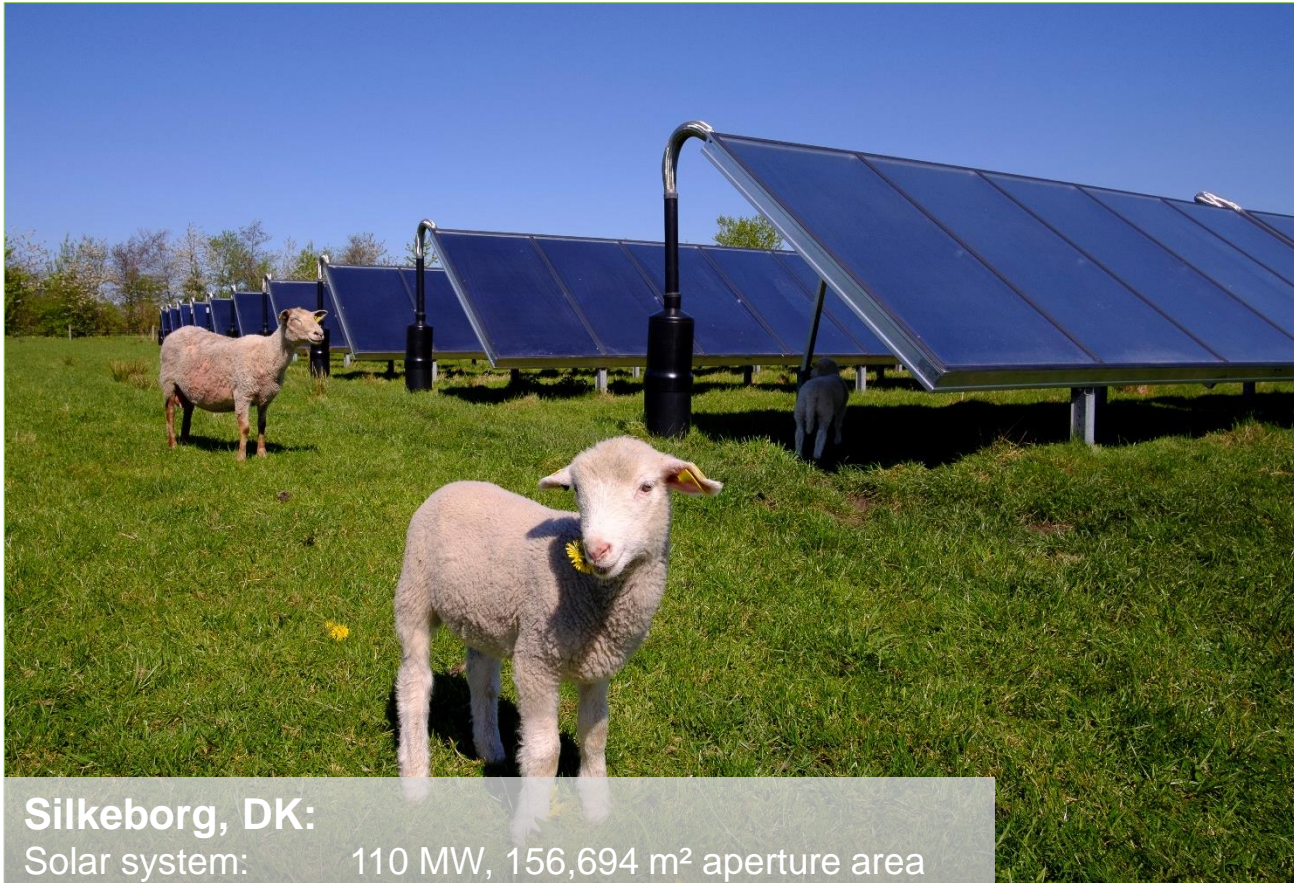
## Large Scale Solar Thermal & District Heating

- **NO** emissions
- **NO** CO<sub>2</sub>
- **NO** primary energy
- **25 years** low and stable heat cost
- **Double use** Put eco-concept on top (compensation area)
- **20..40 €/MWh** are typical (depending on local subsidy)
- **30 years** of experience with 130 large systems (> 1 GW)

# Example: 20% solar coverage of 400 GWh yearly heat demand in Silkeborg

The current world's biggest solar thermal plant: 110 MW peak power

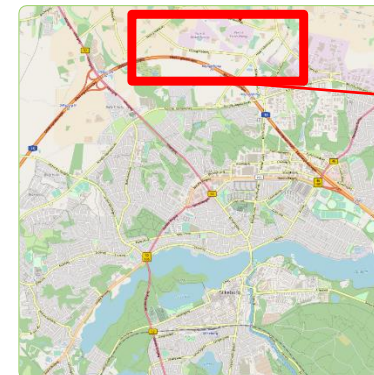
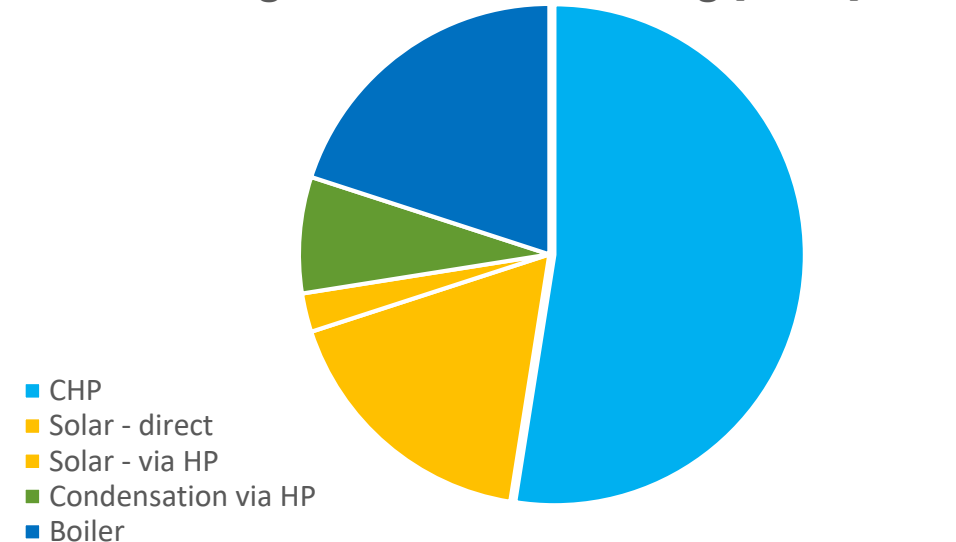
– without CO<sub>2</sub> – No primary energy – 25 years stable and low heat cost



## Silkeborg, DK:

Solar system: 110 MW, 156,694 m<sup>2</sup> aperture area  
Yearly yield: 80,000 MWh (20% solar fraction)  
CO<sub>2</sub>-saving: 15.750 ton/year  
Households in grid: 22.500  
Grid-demand: 400 GWh/a

Heat generation in Silkeborg [GWh]



Source: Open Street Map

