



Flanders
State of the Art

Enhancing Resource Efficiency throughout the EU

Janneke van Veen
06.03.2015

TOGETHER WE
MAKE TOMORROW
MORE BEAUTIFUL

OVAM

Policy tools in Flanders

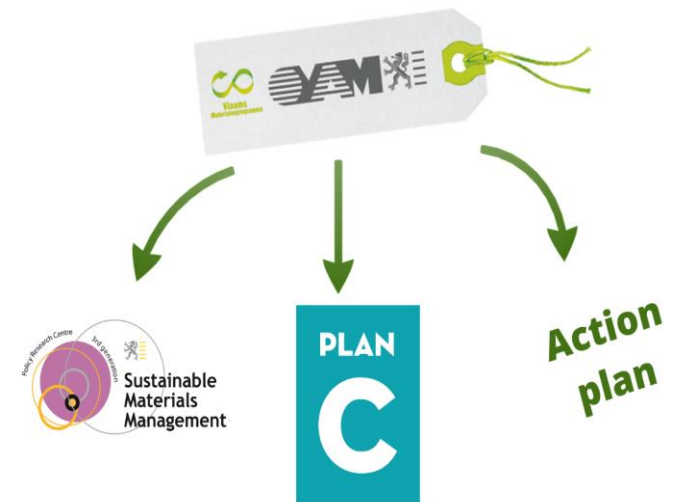
Flemish waste policy becomes sustainable materials management

1. Transposition of WFD 2008/98 into Materials Decree and Vlarema in 2012

3. Executive plan waste management in Flanders



2. Flemish materials programme



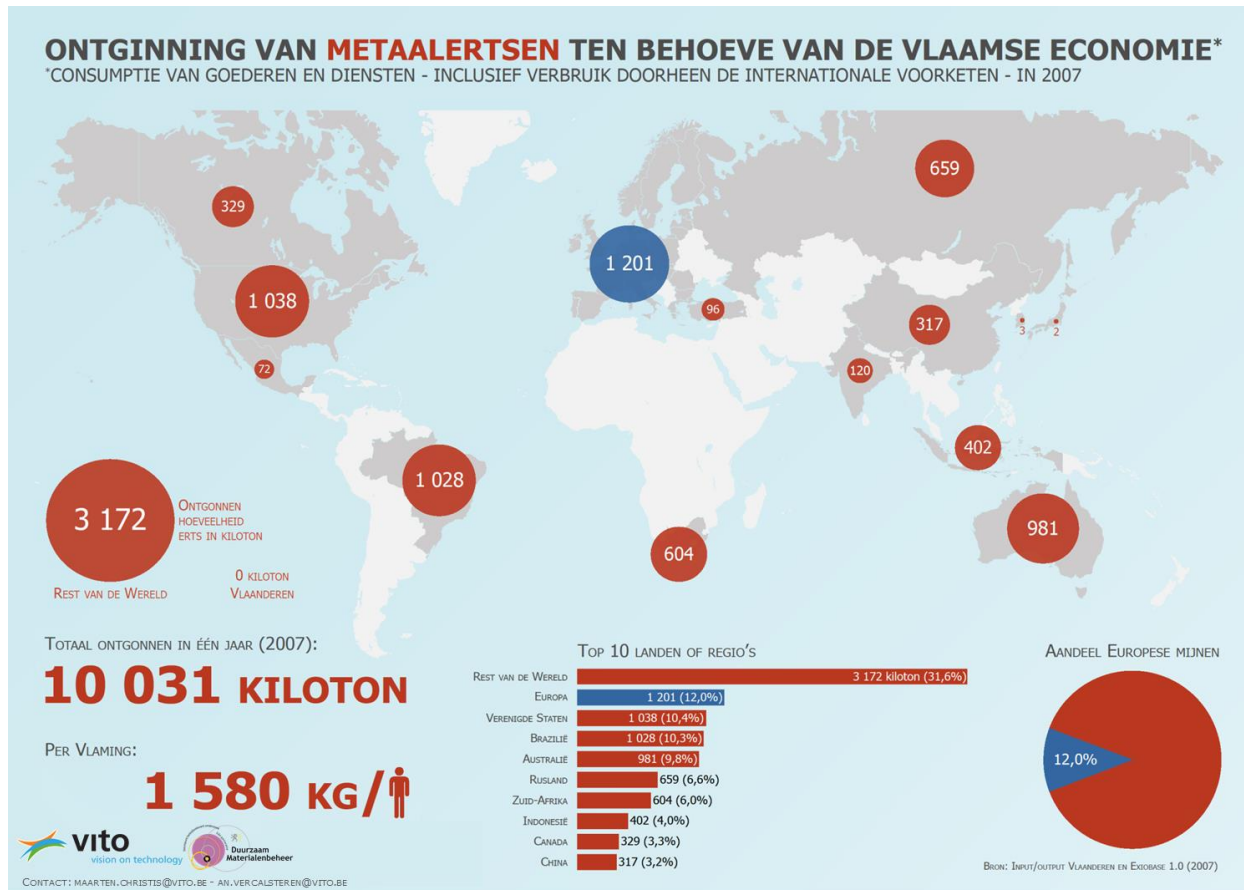
Indicators to measure progress

- ▶ The classic waste indicators
- ▶ A new approach – work in progress:
 - Macro level >
 - × dependency on material imports; and
 - × losses in the value chain
 - Micro level > resource efficiency on an enterprise level

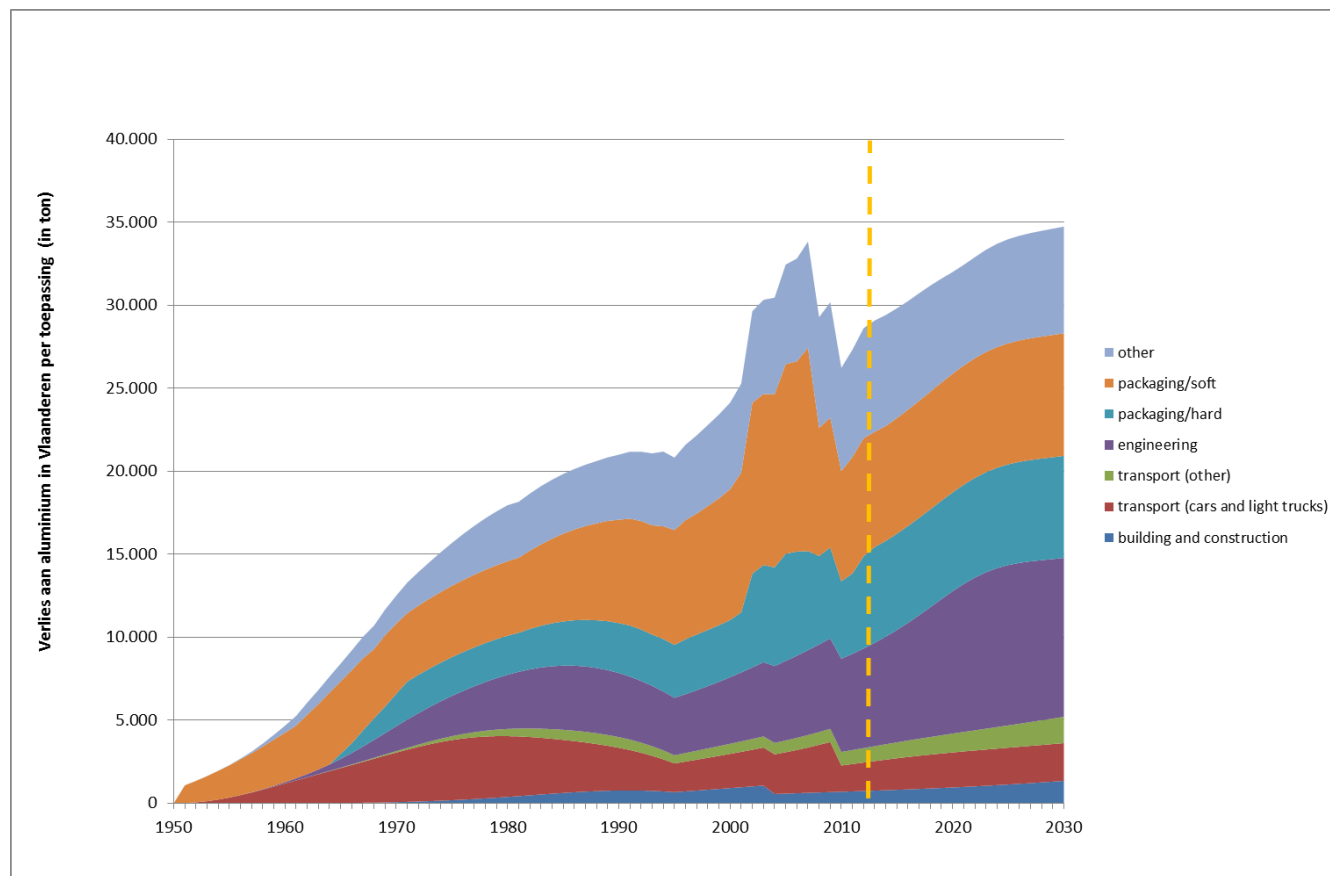
Indicators to measure progress – the classic waste indicators

- ▶ Indicators measuring the total amount of household waste through
 - Separate collection
 - Residual waste
 - Total amount of waste going to landfilling and incineration
- ▶ NEW: measuring similar waste from enterprises
 - Separate collection
 - Residual waste

Indicators to measure progress – dependency on import for metals



Indicators to measure progress – loss of materials > aluminium



Indicators to measure progress – RE on enterprise level



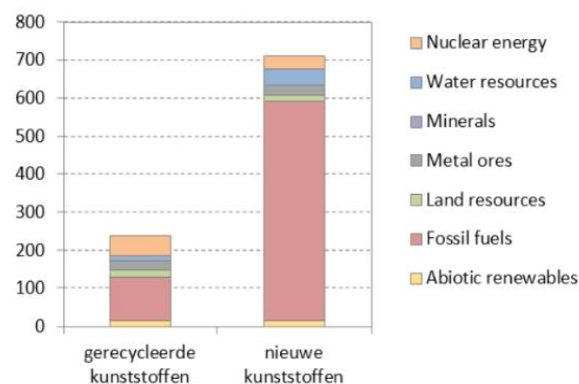
Recycling indicator

Galloo: recycling

Recyclage van plastics uit huishoudelijke toestellen zoals stofzuigers. Recycelat wordt opnieuw gebruikt in stofzuigers.



Resource footprint (MJex) per stofzuiger gemaakt van ...



Recyclability benefit rate indicator van 1 kg plastics = 78%

Recyclability benefit rate indicator van 1 stofzuiger = 82%



Flanders
State of the Art

31/03/2015 | 7

TOGETHER WE
MAKE TOMORROW
MORE BEAUTIFUL

OVAM

What is to come the next few months

- ▶ End of 2015: The new executive management plan for waste
- ▶ Around the summer 2015: Official presentation results of *new* indicators
- ▶ For more background information methodology:
→ <https://steunpuntsumma.be/english/publications>

Main challenges

- ▶ Know what you want to measure and make sure you measure the same over time
- ▶ Be realistic in what you want to measure
 - It costs a lot of time and money
 - When formulating goals make sure you already know how to measure and invest in that
- ▶ When looking at resource efficiency, look at dwindling supplies of resources, instead of just eg recycling percentages
- ▶ When looking at macro indicators, a European database is essential

Thanks for your attention

Are there any questions?

Janneke van Veen
jvveen@ovam.be
+32 15 284 436

**Government of Flanders
Public Waste Agency
of Flanders
Stationsstraat 110
2800 Mechelen, Belgium
T: 015 284 284
F: 015 203 275
www.ovam.be
info@ovam.be**



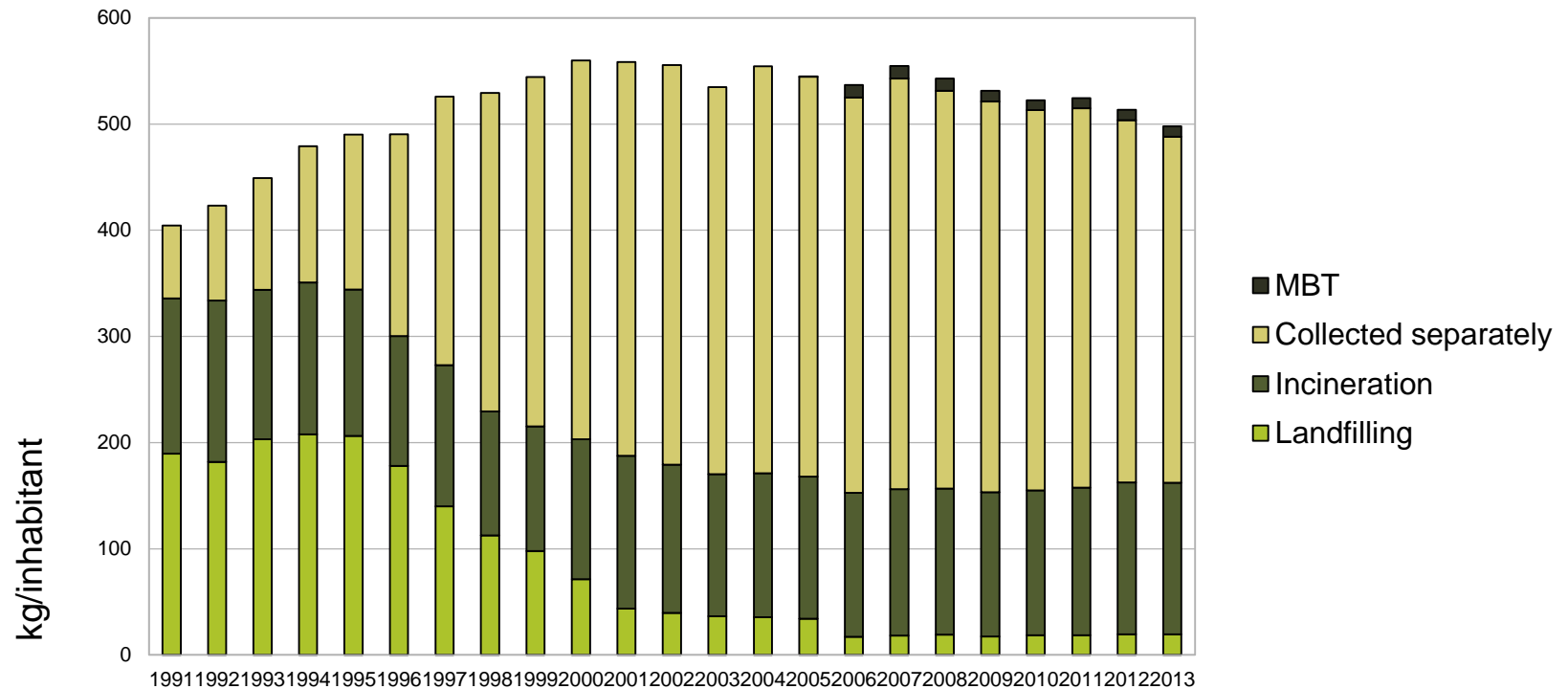
Flanders
State of the Art



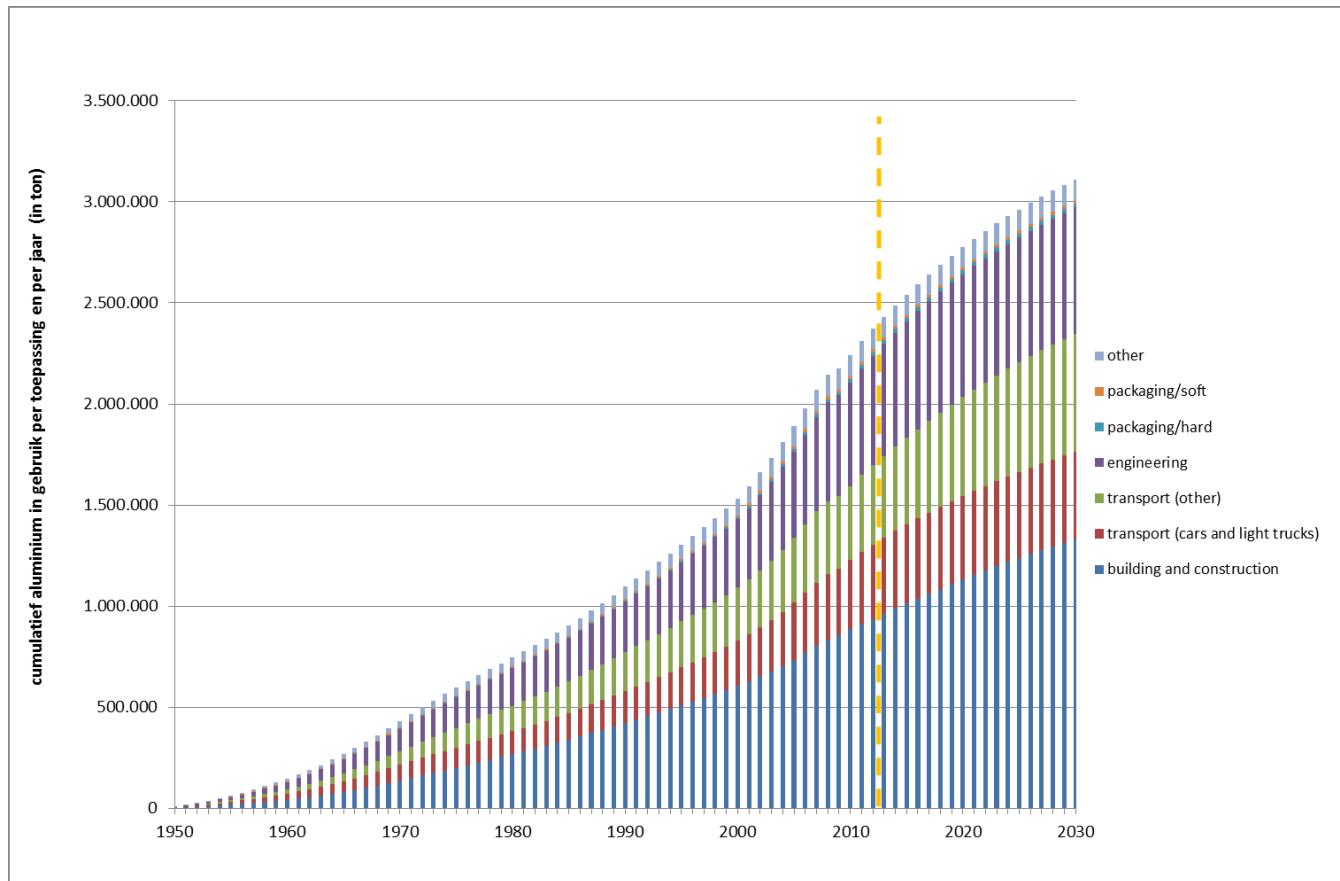
TOGETHER WE
MAKE TOMORROW
MORE BEAUTIFUL

OVAM

Classic waste management does not suffice...



Indicators to measure progress – loss of materials > aluminium



Indicators to measure progress – dependency on import for metals

HET PRIMAIRE NON-FERRO METALEN VERBRUIK* PER VLAMING

*GELINKT AAN DE CONSUMPTIE VAN GOEDEREN EN DIENSTEN - INCLUSIEF VERBRUIK DOORHEEN DE INTERNATIONALE VOORKETEN - IN 2007

Hoeveelheid ontgonnen erts en per vlaming per jaar.



BRON: INPUT/OUTPUT VLAANDEREN EN EIOBASE 1.0 (2007)

*ANTIMOON, ARSEEN, BERYLLIUM, BISMUT, CADMIUM, CHROMIUM, GERMANIUM, HAFNIUM, KOBALT, LITHIUM, MAGNESIUM, MANGAAN, KWIK, MOLYBDEEN, NIOBIUM, SELEEN, TANTAAL, TELLUUR, TITAN, VANADIUM, WOLFRAM, ZIRCONIUM EN ZELDZAME AARDMETALLEN.

TOGETHER WE
MAKE TOMORROW
MORE BEAUTIFUL

OVAM